

## Moulsford Events

Nigel Baker

So, we have finished the summer season of Friday socials; the last Friday night was Wildlife BBQ night with venison and rabbit being served - a lovely night and a big thank you to the Events team, helpers, volunteers and everyone who contributed and turned up to attend.

Looking ahead for events, we have the Church Quiz night on Saturday 19th November 7:30 for 8:00 start.

Tickets are £8.00 - contact Twinks on 651548.

We will also be running our Winter Socials on Friday, 21st October and Friday, 25th November. We are planning a Fish and Chip run to Goring Fish and Chips. Orders in by 7pm please at the Bar again. We will update on Facebook for what's on offer and prices.



On to our last Social, the important one, the Christmas Social. We are looking at Thursday, 22nd December, this will follow on from the carol service in the church with the bar opening from 6:00. There also is the Boxing Day Walk being planned - updates on that in the November issue.

We are aware of the World Cup this Winter. It's a difficult one with timings - dark nights and a low key build up.

However if England make it to the Quarter Finals and there is real interest, we would be happy to open up the Pavilion.

The Gala Night will be on Friday, 16th December, arrivals from 18:30 at Moulsford Prep School. Tickets will be £45.00 each including a glass of bubbly on arrival. Tickets available at both winter socials.

We again will be holding a Raffle. For any offers of Prizes please contact Jo Haywood on 07787 171569. We look forward to seeing you all very soon.

### Children's Carol Service

Calling any children that would like to sing a song, play an instrument or read a piece.

The Moulsford Carol Service in the church is a wonderful tradition enjoyed by so many!

We would love your children to be a part of this special evening.

If you would like to get involved, please contact Twinks on 07884373123 or 651548.

## Parish Council Report

At the beginning of September the handover to our new parish clerk, Sinead Archer, was completed. Sinead has experience working with both South Stoke and Goring parish councils as a deputy clerk, but she takes over as clerk to MPC as her sole role. Our thanks to Geoff Twibell for all his work as our clerk for over 10 years.

The public enquiry discussing plans to build 350 homes on greenbelt land in Cholsey (Cholsey Fields) went ahead at the end of August / early September. As well as disregarding the Cholsey Neighbourhood plan, this proposal highlighted how little consideration had been given by the developer to the impact on Moulsoford – Cholsey's nearest neighbour, just 1m south on the A329. We put in statement objecting to the development in agreement with Cholsey on all points of their response but also: "... to highlight priority issues that would impact our village community in especially damaging ways: access to education and traffic generation." The Planning Inspectorate will put in their report to the Secretary of State; the decision is not expected until the end of the year.

Most of August and September was taken up with the Neighbourhood Priority Statement culminating in the village meeting on 23rd Sept. Cllr Powell's report follows.

## What is a parish councillor - Ben Partridge

Up until four years ago I hadn't given much thought to the workings of a Parish Council let alone being a member of one. When our last Parish Council stood down, I was asked if I would like to stand for election. I agreed, didn't make the cut but was later co-opted onto the Parish Council when a member stepped down.

Why did I initially agree? The answer is two-fold, at the time it was to ensure that there were sufficient candidates to fill the required seats and secondly to do my bit for the community. For my part I have enjoyed the last few years. Understanding the inner mechanisms of our Parish and working alongside my fellow Councillors to contribute to and facilitate the delivery of projects and services that make a positive difference to the community. Yes, more challenging issues arise, but here the satisfaction can be greater when they are overcome.

I hope that in the time I have served as a Parish Councillor I have played my small part in maintaining and hopefully improving the Parish we have all chosen to live in. Be that through input on planning applications, the recreation ground project or just agreeing the contract for the dog bins to be emptied. All these decisions, large and small have to be made and need people to make them...

## Climate Action Website

Launched for Oxfordshire as a one stop shop: [climateactionoxfordshire.org.uk](https://climateactionoxfordshire.org.uk). This is designed to encourage people to think about simple things they can do to help.

It lists measures people can take and rates them according to effort, impact and cost. It also gives people an idea of what financial savings can be made and includes tips and links on how to get started.

## The Queen's Canopy

Following the wishes of the King, the Queen's Green Canopy initiative will be extended to the end of March 2023 to give people the opportunity to plant trees to honour Her Majesty.

SODC are creating a record of all the trees planted across the district, more info at: [southoxon.gov.uk/greencanopy](https://southoxon.gov.uk/greencanopy)

## Cost of Living Crisis – Information and Support

SODC have set up an area on the website to provide information and advice for anyone in financial difficulties: <https://www.southoxon.gov.uk/south-oxfordshire-district-council/cost-of-living-crisis-advice-and-support/>

This resource covers financial and housing support as well as health and well-being. Whether it's practical support or just advice, get in touch on: 01235 422600 or email: [communitysupport@southandvale.gov.uk](mailto:communitysupport@southandvale.gov.uk)

## Neighbourhood Planning Statement

Work is progressing well on the Neighbourhood Planning Statement (NPS). A group of us got together to work through topics we thought might be of interest, in preparation for the village meeting on Friday 23rd September. It was great to get a real mix of ideas reflecting the diversity of our village.

The meeting itself was well attended, with over 35 villagers present. Sue Powell gave a brief presentation of the topics we are considering including in the statement, then everyone had a chance to vote on the ones that mattered most to them and to add new ideas. It was great to hear lots of lively discussion and to see so much interest in how the village develops. Thanks to all of you who attended, we really appreciate it.

A reminder that alongside this month's Moulsoford News, there is a brief questionnaire, which can be completed online or on paper. It consists of 20 questions and we ask you to rank items in order of importance to you. It shouldn't take more than about 15 mins. Your input is important to us as it helps us know what to prioritise in the Neighbourhood Planning Statement.

**Please submit your responses to the Moulsoford village questionnaire by 23rd October - either by completing it online or by returning the paper copy to Laburnham Cottage, Moulsoford.**

We will be publishing the results of the survey shortly after we have got the results back - hopefully in November or December's Moulsoford News. We will also start compiling the evidence to support the items you feel are most important to the village and preparing the first draft of the statement. So watch this space!

A reminder that if you would like to get more involved in creating the NPS; for example, researching a specific topic, do get in contact with Sue Powell [spowell@moulsoford-pc.gov.uk](mailto:spowell@moulsoford-pc.gov.uk).

## Moulsoford Planning Statement 2022/2023 - Questionnaire

Option 1 - Complete and return paper copy to Laburnham Cottage

Option 2 - Complete the online questionnaire using this link: <https://forms.gle/nxQTAglNr1suCWZA>

Option 3 - Complete the online questionnaire using the QR code



# Planning Applications and Decisions

Moulsford News and Planning deadlines invariably mean that the planning information below is out of date by the time of reading. For a current view of planning, please visit the online planning portal here:

<http://www.moulsford-pc.org.uk/community/moulsford-on-thames-15214/planning-applications/>

P22/S2001/HH Downlands, 13 Glebe Close, Moulsford, OX10 9JA	Proposed ground floor side extension. Proposed detached double garage with studio over. Proposed replacement boundary wall and gates. (Amended plans received 23 September to omit one side extension and proposing attached garage accommodation with studio over).	Amended
P22/S2397/HH Braziers Byre, 1 Offlands Court, Moulsford, OX10 9EX	Single storey rear extension and garage conversion.	MPC: No strong views SODC: Granted

## Moulsford Parish Council Meeting

**Thursday 20th Oct 2022**  
7.30pm in the Pavilion  
Everyone welcome!

## Moulsford Events Committee Meeting

**Wednesday 2nd Nov 2022**  
7.30pm in the Pavilion  
Everyone welcome!

## Church Chatter

**Janet Knowles**

After the unexpected news of the death of Queen Elizabeth we are all trying to assimilate the changes that this will have for our country, the Commonwealth and indeed the world, such was her unobtrusive, quiet and wise influence on so many people's lives. Her sense of duty and commitment pledged at such an early stage of her life and faithfully demonstrated right up until she died was an amazing example that most of us would struggle to emulate or even sustain for a short period of time. She often quoted that all was made possible by her deeply held Christian faith. Taking Jesus as her 'mentor' she gave time to a vast variety of organizations, communities and individuals, appeared to know or recognize their concerns and where appropriate or possible responded discreetly or raised her concerns with those empowered to address the issues. Even more importantly she made the effort to follow up to check on the actions taken. In the hurly burly of our hectic lives how many of us could say hand on heart that we always achieve such standards no matter how good our initial intentions were...but perhaps I am just reminding myself of all the things I fail to do!!

So we give heartfelt thanks for the life of Queen Elizabeth and remember her family at this time of great sadness with prayers for them all especially our new King Charles in the days and weeks to come as life goes on but will never be quite the same.

Thanking others is something we often overlook unintentionally. We have organizations and lots of people within our village community that work hard to run events or activities for us to enjoy or go the extra mile for neighbours. So a big 'THANK YOU' to all those who lead, plan or chair groups that cheer and encourage us all. As the weather begins to cool and nights grow longer perhaps we can all remember to keep an eye out for those who may find life difficult or need an extra hand with jobs. A smile does not cost anything but may make a real difference to someone faced with another lonely day.

As a church we are planning to offer some additional support for those amongst us who would like a bit of change of scenery, with food and friendly company. If you are aware of any neighbour who you feel might like to join us please get in touch.... 651401.

And finally, by the time you receive the next edition of the Moulsoford News the interviews for our new Vicar will have been held. The informal feedback prior to the interviews would indicate that the applicants shortlisted seem very capable and would appear to offer an exciting future for us all. Once we are able to inform the village community who the successful candidate is we will circulate more details. At present we are assuming that he /she etc. will be joining the Benefice early in the new year.

N.B. Creation Sunday will be held on Sunday 2nd October....

Have a good month.

Janet

## St. John the Baptist, Moulsoford, September

Monday	Tuesday	Wednesday	Thursday	Friday	Saturday	Sunday
<i>October 2022</i>					1	2 9:30 CW Contemporary Cratontide Rev'd Chris Scott
3 11:00 Keep Fit* 19:30 PCC Church	4	5 10:30 Knitting Group 14:30 House Groups (contact 651401)	6 19:00 House Groups (contact 07765 440014)	7 11:00 Communion Service Rev'd Chris Scott	8 10:00 Quiet Day Rev'd Sarah Burrow	9 9:30 Faith Explored Rev'd Sarah Burrow 18:30 Youth Club, Laurence Hall Cholsey
10 11:00 Keep Fit* Huhudi visit to 26th	11	12 14:30 House Group (contact 651401)	13 19:00 House Group (contact 07765 440014)	14	15	16 9:30 CW Contemporary Rev'd Alan Gates
17 11:00 Keep Fit*	18	19 14:30 House Group (contact 651401)	20 19:00 House Group (contact 07765 440014)	21	22	23 9:30 Morning Praise Laity 18:30 Youth Club, Laurence Hall Cholsey
24/31 11:00 Keep Fit*	25	26 14:30 House Group (contact 651401)	27 19:00 House Group (contact 07765 440014)	28	29	30 9:30 Morning Praise Laity 18:30 Youth Club, Laurence Hall Cholsey

A short morning service is available each day in conjunction with our Partnership Parish of St. Phillip the Apostle, Huhudi, SA by Zoom, WhatsApp and e-mail. Contact Janet Knowles 651401 for further details.

\* CH = Cranford House School

\* For Keep Fit at Cholsey Meadows, contact 599433



# What's on in Moulsoford and Surrounding Areas

## Monthly Coffee Shop

Gail Slinger



The next **Village Coffee Shop** is on  
**Wed 12th October 2022** in the **Pavilion** from **10:30am** to **12 noon**.



**October** is 'Spooky Halloween' with **Pumpkins** everywhere in our village.

Putting the kettle on in **October** will be **myself** and **anyone who would like to help**, we could have some interesting **Halloween Treats** to tempt you all plus the fab coffee and tea.

Please come and join us in October, bring a friend, neighbour or family member, we want to see you all.

The September Coffee Shop had another great turnout, September was MacMillan month so all your £1.50's and generous donations are being donated to this charity. Once again you all did an AMAZING thing, the total collected was £100.00. Thank you all so much, these funds I am sure will go towards helping so many people in the UK.

A BIG Thank You to Pat & Audrey for 'Putting the Kettle on', amazing ladies, thank you also to everyone who donated delicious cakes for us all to enjoy.

**We still have plenty of space on our calendar list for 'Putting the Kettle on' please don't be shy, put your name down one and all, it's really easy.**

See you all very soon.

### Future Dates

November 9th

December 14th



## Wallingford Country Market



Wallingford Market is open every Friday morning in St. Mary-le-More Church (behind the Town Hall) between 9.30 a.m. - 12 noon, where we sell a range of Baking, Plants & Produce, Preserves, Honey, Eggs (when available) and Crafts. The market has been a popular feature of the town for nearly fifty years.

However we are sorry to say that the number of Bakers has decreased. So to ensure we continue to offer a good range of baked goods, from October the Bakery Table will only be available on the first and third Fridays of the month, (i.e. 7th/21st Oct., 4th/18th Nov., 2nd/16th Dec., with an extra special Christmas Market 23rd Dec., our final one of 2022). We return after the Christmas break on the third Friday, 20th January, 2023.

A special 'Apple Day' has been arranged for 7th October, and Mince Pie Tasting is planned for 18th November, also the start of Christmas Orders for most baked items we sell.

It is important to note - there is no change to the availability of the rest of the products sold – plants, produce and craft, which will still be available every Friday at the church.

Baking will return to being available each Friday if we can recruit new bakers. So, if you love to cook, (sweet or savoury), and feel that you may like to join us, please contact Alison (our Market Manager) for further information: Tel. 01491-681596 or pop into market one Friday morning and speak with her, or any of the bakers. You would not necessarily have to bake every week – but any additional help is going to be very much appreciated.

WALLINGFORD COUNTRY MARKET COMMITTEE

*The Gala*  
*Moulsford's Christmas*  
*Celebration*  
*Dinner & Dance*

Friday 16th December, 2022 | 19:00 'til late

Moulsford Pre-Prep School

Tickets - £45pp

Includes: Arrival drink,  
dinner and disco

Available: Paid bar, Raffle  
Tickets with great prizes  
Dress Code: Black Tie

Contact:

Indie Blackwell: 07825 917617

Jo Haywood: 0778 7171569

Lottie Cargen: 07825 446139





**MEADOWS MORNING MARKET**

**We're back!**

**Last Saturday of the month**

**9am - 1pm**

Cafe.Bread.Brownies.Pies.Meat.Jewellery  
Clothing.Glass Crochet.Cards.Bags.Candles  
Skincare.Pottery.  
And much more.....

**The Great Hall, Cholsey Meadows, OX10 9GW**

### Spinning Club - Social Craft

Third Thursday in the month  
6.00 - 10.00pm, at the Pavilion  
£2 per session.

Come and join a group of local craft people for an evening of relaxation.

For more information, call  
Linda Scurr on 652916.

From 16th March 2022 until further notice									
133 Goring - Wallingford via Streatley & Moulsoford									
Days of Operation	Tuesdays		Wednesdays		Thursdays		Fridays		
<b>Starts from</b>	<b>R'DING</b>			<b>CLEEVE</b>	<b>HENLEY</b>				
GORING, Railway Stn Forecourt	10:25		09:00	11:08	10:25		09:18	11:40	
Goring Surgery/Library	10:26		09:01	11:09	10:26		09:19	11:41	
Swan Hotel/Streatley Traffic Lights	10:28		09:03	11:11	10:28		09:21	11:43	
Streatley Primary School	X		X	X	X		X	X	
Moulsoford Beetle & Wedge turn	10:31		09:07	11:15	10:31		09:24	11:46	
Moulsoford, Old Vicarage	10:32		R	R	10:32		09:25	R	
Wallingford Hospital	R		09:12	11:20	R		R	11:50	
Wallingford LIDL									
WALLINGFORD Market Place	10:45		09:20	11:30	10:45		09:39	11:58	
<b>Continues to</b>			<b>DIDCOT</b>				<b>WTON</b>		
<b>Starts from</b>				<b>DIDCOT</b>					
WALLINGFORD Market Place		12:00	10:40	13:05		12:00	11:15	14:05	
Wallingford LIDL							P	P	
Wallingford Hospital		12:01	10:41	13:06		12:01	P	P	
The Meadows		12:04	10:44	13:09		12:04	11:19	14:09	
Moulsoford, Old Vicarage		R	R	R		R	R	R	
Moulsoford Beetle & Wedge turn		12:07	10:46	13:11		12:07	11:22	14:12	
Streatley Primary School		R	R	R		R	R	R	
Streatley, The Coombe		R	R	R		R	R	R	
Streatley Traffic Lights/Swan Hotel		12:10	10:49	R		12:10	11:25	14:15	
GORING, Railway Stn Forecourt		12:20	11:00	R		12:20	11:35	14:25	
<b>Continues to</b>		<b>W'FORD</b>	<b>CLEEVE</b>			<b>HENLEY</b>			

**DFL** Dorchester Flyer: to or from Dorchester village      **WTON** To Watlington via Home Park, RAF Benson & Ewelme

P Picks up here on request only by prior arrangement with the driver on the outward journey  
R Sets down only at these points on request to the driver by passengers already on board at previous timing point  
X Due to parking problems this service will not run via this point

**Sorry, no services on other days or on Public Holidays**

**All times subject to change at short notice. Please check our website before you travel. Times shown on Traveline or other websites may not be up to date.**

**CONCESSIONARY PASS HOLDERS**  
**Free travel on all these services**

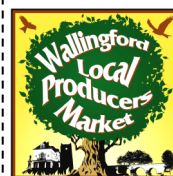
### Cholsey Community Library

Monday to Friday      2pm to 4.30pm

Friday Evening      6pm to 8pm

Saturday Morning      9.30pm-12.30pm

### Wallingford Local Producers Market

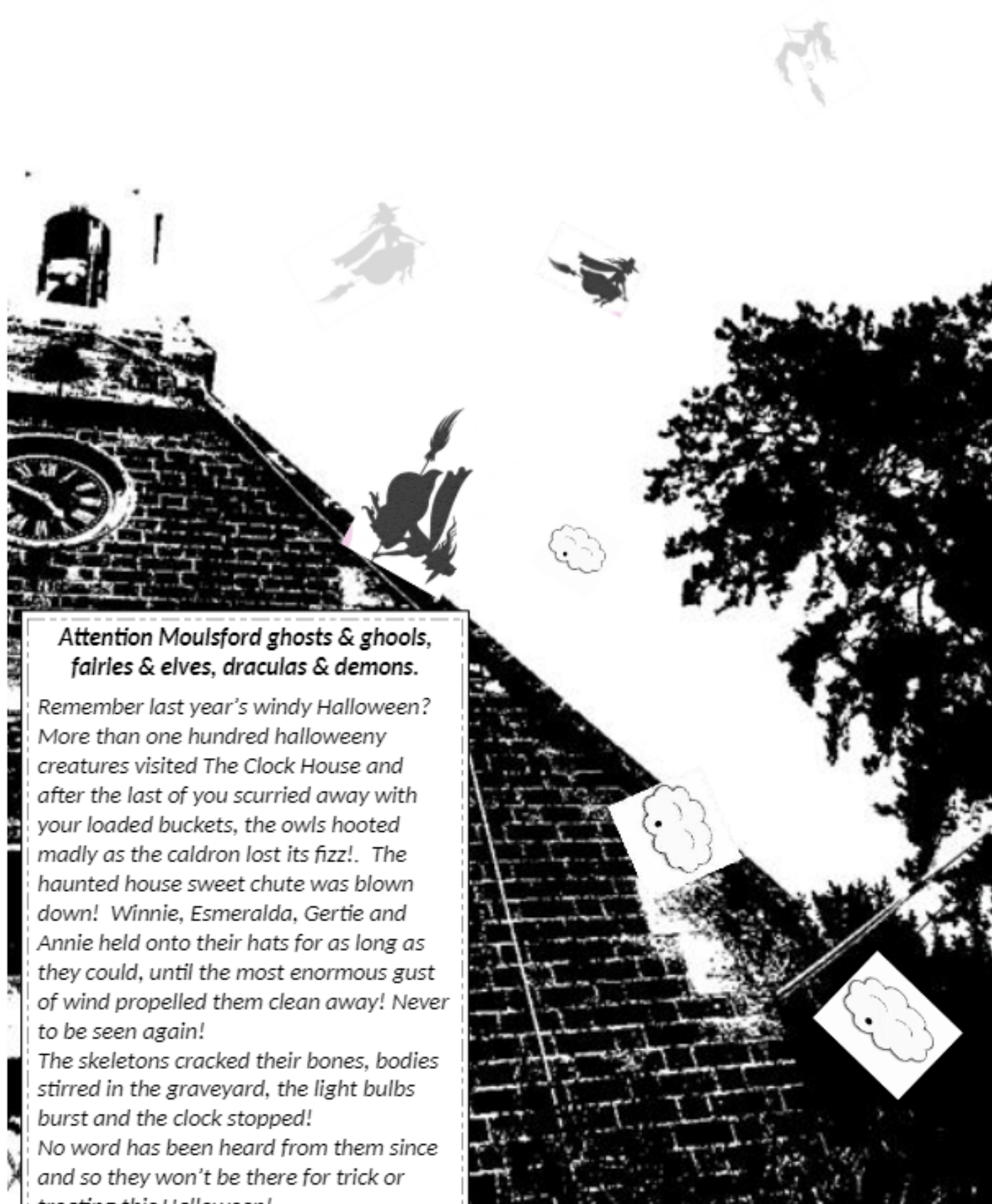


Held every Saturday from 10am to 12 noon in the car park and buildings of Centre 70, community centre at the junction of Goldsmiths Lane and the Kinecroft, OX10 0DT.

WLPM hosts the best of locally-produced food and crafts that are grown, harvested and made within 30 miles of Wallingford. We champion local farmers and vegetable growers, cheese-makers, bakers, and makers of honey and preserves. Every market has a range of craft stalls including textiles, jewellery, ceramics, art and photography, all hand-made by local people.

Usually our food stalls can be found outside with the craft stalls tucked away inside.





**Attention Moultsford ghosts & ghools,  
fairies & elves, draculas & demons.**

*Remember last year's windy Halloween? More than one hundred halloweeny creatures visited The Clock House and after the last of you scurried away with your loaded buckets, the owls hooted madly as the caldron lost its fizz!. The haunted house sweet chute was blown down! Winnie, Esmeralda, Gertie and Annie held onto their hats for as long as they could, until the most enormous gust of wind propelled them clean away! Never to be seen again!*

*The skeletons cracked their bones, bodies stirred in the graveyard, the light bulbs burst and the clock stopped!*

*No word has been heard from them since and so they won't be there for trick or treating this Halloween!*

*Have fun in the village!*

## What's on in Moulsoford and Surrounding Areas *continued*

### Henley and District Stamp Club



The evenings are rapidly drawing in and it is time to think of an interesting hobby. If you enjoy 'collecting' what about stamps, postcards, old letters or their covers? If you are interested in anything to do with the post or would like to find out more visit us at Bix one Wednesday evening. You will find an interesting hobby, that takes in many subjects and the opportunity to do research into different aspects of 'philately'. You could also get help and advice to start or to increase your knowledge.

Wed, 12th October - An experimental evening trying out Power Point for our displays.

Wed, 26th October - Members evening – Telling a story in 2 x A4 pages or 1 x A3 illustrated with different philatelic items. Any topic you like.

Dates for your 2023 Diary:

22nd Feb Auction Viewing. 8th Mar Our Open Auction.

Meetings are held the 2nd and 4th Wednesday of the month at Bix Village Hall at 7.30pm Visitors and new members are welcome.

Further details can be obtained by phoning 01491 681739 or on our website [www.henleyphilatelic.org.uk](http://www.henleyphilatelic.org.uk)

### THE COFFEE SHOP



**WEDS 12th OCTOBER**

**10.30AM-12NOON**

If you fancy a couple of hours of chatting, relaxing and drinking coffee or tea, do join us, £1.50 donation.

Please do come along, everyone from the village is welcome. For more information call Gail Slinger on 01491 651931 or email [gailslinger2601@gmail.com](mailto:gailslinger2601@gmail.com).



### What's On at the Corn Exchange in Wallingford, Cinema/Theatre:

#### October Calendar

##### NT Live

Jack Absolute Flies Again - 6th Oct, 7-10.15pm

See How They Run - 7-9th Oct, 7.30-9.45pm

##### Matinee

See How They Run - 8th Oct, 2.30-4.45pm

Mrs Harris Goes to Paris - 10-11th Oct, 7.30-9.30pm

##### Matinee

Mrs Harris Goes to Paris - 12th Oct, 2.30-4.30pm

##### Live The Royal Opera

Aida - 12th Oct, 6.45-10.30pm

Mrs Harris Goes to Paris - 13th Oct, 7.30-9.30pm

Ticket to Paradise - 14-16th Oct, 7.30-9.45pm

Queen of Glory - 17th Oct, 7.30-9.30pm

A Bird Flew In - 18th Oct, 7.30-9.15pm

##### Matinee

Hallelujah: Leonard Cohen,  
A Journey, A Song - 19th Oct, 2.30-4.30pm

Hallelujah: Leonard Cohen,  
A Journey, A Song - 19-20th Oct, 7.30-9.30pm

Lyle, Lyle, Crocodile - 21-23rd Oct, 7.30-9.15pm

##### Matinee

Lyle, Lyle, Crocodile - 22-23rd Oct, 2.30-4.15pm

Moonage Daydream - 25th Oct, 7.30-9.45pm

Info: <https://www.cornexchange.org.uk>



Photo Jonathan Booty

**PLEASE  
CHECK  
BONFIRES  
CAREFULLY  
FOR SLEEPING  
HEDGEHOGS  
BEFORE LIGHTING**

*#rememberhedgehogs*

If possible the entire pile should be re-sited before being lit, if not possible, use broom handles to lift from the base of the pile, and shine torches, looking and listening carefully for any signs of life.



British Hedgehog  
Preservation Society  
Hedgehog House,  
Dhustone, Ludlow,  
Shropshire, SY8 3PL  
Tel: 01584 890801  
[www.britishhedgehogs.org.uk](http://www.britishhedgehogs.org.uk)



# Elli the Gardener

## Gardening Diary

Hi everyone!

This month has been mostly harvesting. We harvested our last lot of runner beans, and got a fair few out of them, which we ate that day. They were pretty yummy! We also harvested the ones that had started drying, and they are drying on the windowsill right now. Then we pulled out the beanstalks and put them in the compost, making sure that we put any weeds in the bin.

Our beetroots didn't do so well this year but we still got one good plant with quite a few beetroots. We ate them with some friends a few days later.

A bit ago we had taken out the corn after getting quite a harvest from them, and in their place we planted a few beans after soaking them in water (a tip Bert gave us to make them germinate better).

We also collected some horse manure from the field next to the playground and we are hoping to get some more somewhere else too. With it, we are making a massive compost heap that will be a pile of layered manure and wood chips, rotting down into good mulch.

We also have harvested our five pumpkins which are hardening on the windowsill. The smaller ones we will eat and the big ones are ready for Halloween.

I hope your harvests have gone as good as ours, bye!



## Gardening Quiz

Name a plant that has adapted to its environment.

Are snowdrops perennial?

How do you care for an oxalis butterfly plant?

Which plant takes its name from the Italian phrase for Beautiful women?

What is the name of the female reproductive organ of a flower?

## Challenge

In winter, put the heating lower and wrap up warm instead, it saves more energy!

## Gardening Tip

If you want to grow plants to support pollinators, avoid newer cultivations with double flowers because all the extra petals make it harder for insects to reach the nectar and pollen.

## Answers for the last quiz

February fairmaids are also known as snowdrops!

The national flower of Mexico is the dahlia.

The flowers and leaves of chickweed are edible, although in large quantities the saponoids it contains can cause stomach upset. They can be eaten raw or cooked.

This is false, ferns are definitely a shade loving plant!

This is also false! Ladybirds eat the aphids, which is very helpful, as the aphids are pretty bad pests!

## Local News

### Thank the earth: this half term visit Earth Trust Farm for Pumpkin Patch family event

This autumn, local environmental charity Earth Trust reminds us to value the earth beneath our feet and all it provides, with a special event as part of a 'Thank the Earth' season.

Visitors to Earth Trust's farm will be getting their hands dirty and boots grubby as they pick pumpkins and squash of all shapes and sizes direct from the growing field.

With the purpose of inspiring people to address climate, biodiversity and wellbeing with the power of natural green spaces, Earth Trust is keen to support a deeper understanding of our ecosystem, the part we play in it and crucially, our role in caring for it.

'[Pumpkin Patch: Pick a Pumpkin, Explore our Maize Maze](#)', will take place from Saturday 22nd to Sunday 30th October at Earth Trust's farm, nestled beneath the iconic Wittenham Clumps. Alongside the opportunity to get to grips with gourds of all kinds, visitors can explore a maize maze and enjoy refreshments at a pop-up café run by the Wallingford restaurant [5 Little Pigs](#).

Recent studies have shown that many children are unaware of where their food comes from. For instance, whilst 8 out of 10 children are concerned about the environment, 28% do not know that carrots grow in the soil. The earth beneath our feet is a dynamic, living resource for more than just produce; in fact all lifeforms on earth depend on soil to survive. It is home to more than 25% of our planet's biodiversity and captures around one third of the carbon emissions that drive the climate crisis. So, thinking carefully about how we care for this precious resource, and value the produce it gives us is important in helping us to support practices that are good for the soil, climate, nature and human health.

At the heart of Earth Trust's fun family event is an important message: making a difference to how we care for the natural world starts with us, and it starts right under (even the littlest) feet. Traditional pumpkin events can generate extraordinary levels of waste. It is estimated that around 24 million pumpkins will be purchased this October in the UK alone, with over half being thrown in the bin – that's 6.6 million tonnes of wasted food going to landfill. Earth Trust has planted a wide variety of tasty squash and pumpkin for wonderful wonky variety, beyond just carving and decoration. Visitors will be encouraged to cook, carve and most importantly, compost their pumpkins (seeds and all) after they get home, so that together we can squash waste. What's more, any surplus pumpkins and squash from Earth Trust's Pumpkin Patch will be gleaned by [Good Food Oxford](#), and redistributed by Oxford Food Hub to kitchens, cafés and other places where the produce will be cooked for local communities to enjoy. Even the maize stalks from the maze at the event will be used to feed the cows on a neighbouring farm.

Ian Nutt, Earth Trust Director of Programmes and Partnerships shares his thoughts about the event, and the Thank the Earth season: "This year the effects of global warming have been felt by us all, with extreme weather conditions dominating headlines and our daily lives. It is now clearer than ever that life on our planet depends on our natural resources. With this in mind, thinking about how we care for the earth is essential. It therefore seems entirely fitting to mark the launch of our Thank the Earth season at our Pumpkin Patch event. Even when starting with something as small and humble as a pumpkin, each and every one of us can make a difference. By all means let's cook, carve and have fun with this amazing crop at this time of year. But we can also think differently about how we dispose of it afterwards in an effort to squash waste. We have some fantastic resources, tips and ideas that we would love to share with you. And we are so excited to welcome the local community to our Pumpkin Patch event this October!"



## Moulsford School Annual Firework Display

Dear neighbours,

I am writing to inform you that Moulsford Preparatory School will be holding their annual Bonfire Night on the afternoon and evening of Thursday 3rd November 2022. The timing will be approximately 5.45 – 8.00pm.

The event will take place within the school grounds but will also involve spectators arriving and parking on the School playing fields, Pre-Prep site and Cranford House School car park. The fireworks will be fired from the South Stoke side of the river, opposite the Moulsford Preparatory School river frontage.

Children and adults will be crossing the road from the parking to the school between the above times so we will be kindly asking everyone to please reduce their traffic speed to help us all ensure everyone's safety.

We will do our utmost to keep disruption to a minimum and apologise in advance for any inconvenience which it may cause you.

We really hope you enjoy the fireworks display.

## Life at Greenlands Farm, Autumn 2022

Harvest was upon us before we knew it this season. With the long dry spring and early summer, you will have seen the fields around very much suffering from the drought. Harvest started about two weeks earlier than usual. With this, the crops were dry enabling the crops to be cut quickly as no dew holding up the start time. One problem we did get was the crop coming in too hot which has meant we have been cooling it ever since.

A friend of mine in the area, ended up starting cutting about five in the afternoon, until about 9.00 in the morning to keep things cooler.

Some of you know that we had a stubble fire, the fire brigade were very quick on scene and no damage done, nothing sinister expected.

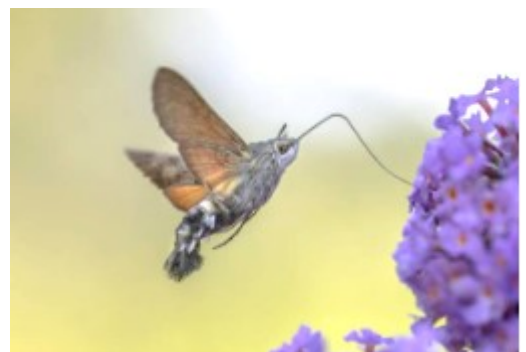
Even more disappointing was when we cut our pea crop, the Red Kites were following the combine catching young partridges and hares, we were in the field showing a grandchild the combine and witnessed quite a few being taken apart.

The farming process has restarted with some Oilseed Rape being planted and winter wheat will follow a bit later on.



Even our stewardship areas have not coped well, most covered with fat hen which has swamped out the wild flowers and wild bird feed crops. Soon we will be able to cut some on the headlands, too late I suspect to stop the onslaught of noxious weeds next spring.

On a better note we have had some roe deer fawns, not in the least perturbed by myself and the dogs and in our garden we have also had some Hummingbird Hawk moths, never seen them before quite beautiful and very busy gathering nectar.



The girls' glamping has been in continuous success, being full most of the season, we had to restrict BBQs as the grass was far too dry. Fortunately, they understood. Their season finishes at the end of this month.

John Beacroft, Greenlands Farm





# Tree Time

Hello,

and welcome to my first ever Tree Time interview.

I will, every month, be talking about a chosen tree and telling you loads of weird and wonderful facts about these amazing beings, so, let's get started!

My first tree will be a Rowan Tree, which can also be known as a Mountain Ash Tree.

It can occur as a tree or shrub that grows between 5 and 15 meters in most of Europe. It is a deciduous tree, meaning in the Autumn, it will shed its leaves.

The top of the tree, known as a crown, is irregularly shaped with very loose foliage.

Working our way down from the top to the bottom, we notice some oddly shaped leaves. They are compound leaves, so they consist of many singular leaves (see picture 1 for compound rowan or mountain ash leaf), which turn outstanding colors in Autumn, varying from soothing yellow to a bright reddish-purple.

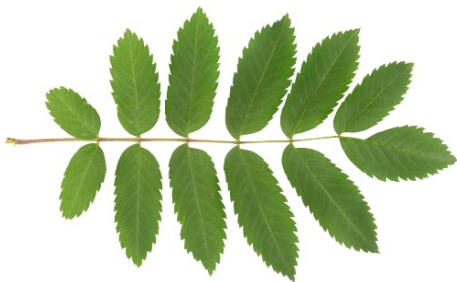
Moving on to the blossoms; these white bunched flowers (see picture 2 for rowan or ash flowers) develop into the famous blood-red rowan tree berries (See in picture 3).

Earlier, in the 16th century, humans believed that these berries kept dark curses or evil beings away. People then even surrounded their houses with dried and crushed rowan berries, in the hope to keep demons and devils away.

Now we must conclude this description with its gray and smooth trunk, which can have two distinct forms in the wild; either a single trunk or in a multiple stemmed form if the plant is too close to the floor.

Now I must say goodbye, and have a good one!

1)



2)



3)



4) The whole tree



## Moulsford News Contributions

Planning a local event?

Wanting to share some poetry or wisdom?

Celebrating a special day or sporting/musical/... achievement?

Doing something for charity?

Share your news, plans and stories with us!

You can reach the editor, Katja Abel by email:

[moulsfordnews@moulsford-pc.org.uk](mailto:moulsfordnews@moulsford-pc.org.uk)

Deadline for November edition: **Wednesday, 26th October 2022**

.....

## Advertising

Busy Baskets Nursery trading as:



**Purely Plants**



A multitude of varieties & colours of bedding, basket, border and patio plants all grown on the nursery

Best selection of Winter/Spring flowering Pansies

Basket & Container Planting Service

Autumn Season Sept - Nov • Open 7 days a week 10am - 5pm  
142a Wantage Road, Wallingford, OX10 0LU.  
**01491 833 831** [www.purelyplants.co.uk](http://www.purelyplants.co.uk)

### BABYSITTING

Reliable and enthusiastic teenagers available.

Tom, Ella and Jake  
Beardmore-Gray.



One of them is sure to be free!

Mobile: 07710 325604

For advertising contact:

Emma Reynolds at  
[reynolds743@btinternet.com](mailto:reynolds743@btinternet.com)

Deadline for Nov edition:

Wed, 26th Oct 2022



**C & G  
MOTORS**

- Servicing
- MOT's
- Repairs
- Tyres & Tracking
- Exhaust Systems

- Diagnostics
- Air-con Re-gas (R134A & R1234YF)
- Welding
- FREE Safety Check Over .... And much more!

**01491 652971**

UNIT 3 WESTFIELD FARM, WESTFIELD ROAD, CHOLSEY, OX10 9LS





Fullers Road, Aston Tirrold Oxfordshire OX11 9EN  
matt@chequersgarage.demon.co.uk  
www.chequersgarage.com

At Chequers Garage we look after our customers as well as their cars. That's why we have courtesy cars, offer local collection and delivery and every car is washed before it is returned - not only will your car run well, it will look great too!



**MOT SERVICE**  
**TYRES AIR CON**

**CALL 01235 850347**



## DIDCOT CALOR & PAVING CENTRE

RICH'S SIDINGS, LOWER BROADWAY,  
DIDCOT, OX11 8AG

TEL: 01235 814186

Email: [sales@didcotcalor.co.uk](mailto:sales@didcotcalor.co.uk)

OPEN MON - FRI 8.30am - 5pm, SAT 9am-4pm

**BRADSTONE, NATURAL PAVING &  
STONEMARKET STOCKISTS SPECIALISING IN  
NATURAL SANDSTONE & LIMESTONE, GRANITE &  
PORCELAIN PAVING SLABS**

**SAND - BALLAST - SHINGLE (bulk load available)  
COBBLES - DECORATIVE CHIPPINGS**

**PRE PACKED COAL & SMOKELESS FUEL - LOGS &  
KINDLING - ROCK SALT - SALT FOR DISHWASHERS &  
WATER SOFTENERS**

**DOMESTIC & INDUSTRIAL GASES -  
HELIUM FOR PARTY BALLOONS**

**GRANGE FENCE PANELS**

## CHAUCERS picture framing

High quality framing at realistic prices.

Huge selection of frames & mounts.

Conservation materials &  
speciality glass.  
Restoration & cleaning.

Free quotes & guidance, no obligation

**01491 652984**

Web: [www.chaucersframing.co.uk](http://www.chaucersframing.co.uk)  
Email: [sallie@chaucersframing.co.uk](mailto:sallie@chaucersframing.co.uk)



## Berkshire's Exclusive Skin Health & Laser Clinic

### Skin Health

Bespoke non-surgical  
anti-ageing treatments.  
Acne & rosacea specialists.

### Body & Hair

Body sculpting & fat removal.  
Pain-free laser hair removal.

### Women's Health

Emsella for incontinence.  
Diastasis recti rehabilitation.

Andresa Aesthetics Exclusive Skin Health and Laser Clinic  
Tel: 01635 800183 | [info@andresa.co.uk](mailto:info@andresa.co.uk) | [www.andresa.co.uk](http://www.andresa.co.uk)  
Lower Wasing Barn, Wasing Lane, Nr Woolhampton RG7 4LY

"A place to relax, soak up the sun,  
hit a ball or two and enjoy life..."

### La Manga Club, Spain



3 championship golf courses, 28 tennis courts, fitness centre, spa, cricket, football, golf and tennis academies & coaching for all ages, cycling, outdoor pools, beach, restaurants galore.  
2 bedroom, 2 bathroom, 2 sun terrace villa, gas bbq, new luxury beds, large tv, sky sports, UKtv, free wifi.

#### AVAILABLE TO RENT THROUGHOUT THE YEAR

web: [www.lamangaclubm54.com](http://www.lamangaclubm54.com)  
email: [villa@lamangaclubm54.com](mailto:villa@lamangaclubm54.com)  
or contact Sallie on 07887 975925  
(Moulsford owners)

### BRIAN WINDSOR

CARPENTRY, REPAIRS AND  
GENERAL MAINTENANCE

30 YEARS IN THE TRADE, JOBS CARRIED  
OUT IN A TIDY AND EFFICIENT MANNER

£25 PER HOUR

**PHONE: 07749197172**

## Babysitting Service

Reliable and experienced babysitters,  
available weekends and school holidays.



Contact Charlotte Reynolds on 07799  
033907

## PWG TREE SURGERY



- Tree Felling
- Stump grinding
- Pollarding
- Deadwood & ivy removal
- Crown reductions
- Hedge Management & planting
- Reshaping & thinning
- Fruit tree pruning
- Tree Planting & supply
- Onsite tree milling
- Tree surveying & reports
- Bird, bat & owl boxes supplied & installed
- Mulch supplied for trees & borders
- Kiln dried logs supplied £75 per bulk builders bag

Contact : 07885552014

Office: 01491 652146

Email: [PWGTreeSurgery@gmail.com](mailto:PWGTreeSurgery@gmail.com)



## Are you searching for peace of mind?

Put your loved one in our safe  
professional care. Call us for a free  
assessment and understand what  
we can do for YOU.

### Join our amazing care team!

Do you need a dose of the feel good  
factor? Please contact  
[heloise.slater@q1care.co.uk](mailto:heloise.slater@q1care.co.uk) for  
more information.

Home Care across West Berkshire & South Oxfordshire

Email us: [info@q1care.co.uk](mailto:info@q1care.co.uk) /

[heloise.slater@q1care.co.uk](mailto:heloise.slater@q1care.co.uk)

Call us: 0118 932 3865

## Here to help you find and book the perfect holiday...



Arranging a holiday can be very frustrating and challenging. But with Full Circle Travel, it doesn't need to be.

- We are a local, independent travel agent with mature, professional and well-travelled consultants.
- You do not pay more for our service but get a lot more than booking direct.
- You can book with your favourite tour operator but book locally.
- We are ABTA and AITO members and ensure your money is safe in an uncertain world.
- We listen, we care and are passionate about finding you the perfect holiday.
- Search 'Full Circle Travel' at [www.trustpilot.co.uk](http://www.trustpilot.co.uk) to read what our clients say about us.

A selection of operators you can book with us at no extra cost to booking directly: **Club Med - Cox and Kings - Abercrombie and Kent - Mark Warner - Audley Travel - Explore - The Adventure Travel Company Royal Caribbean - Carrier - Western & Oriental - If Only - Beachcomber - Exodus - Kuoni - Viking River Cruises - Seabourn, Riviera Travel - Silversea - Regent Seven Seas - Classic Collection - Prestige Holidays**—plus many more

[www.fullcircletravel.co.uk](http://www.fullcircletravel.co.uk)

T: 01491 833227

Full Circle Travel, 59 St Marys Street, Wallingford, OX10 0EL

E: [holiday@fullcircletravel.com](mailto:holiday@fullcircletravel.com)

### CHEMISTRY TUITION

**Jasmina Harrison**

Chemistry tutoring by a highly experienced former Head of Department at a local independent secondary school

Tuition at all secondary levels including GCSE, A level and IB

Offering personalised tuition at my home in Dorchester or can visit students in Dorchester, Benson, Wallingford and Goring areas.

In person and online.

Skilled in building confident students at all levels of Chemistry, enabling them to achieve their potential.

01491 712330

[jasmina@rwhconsulting.uk](mailto:jasmina@rwhconsulting.uk)

## Registered Osteopath

Mr Rohan Iswariah D.O.

For vouchers & information please visit our website at:

**[www.localosteopath.com](http://www.localosteopath.com)**



**01491-838866**

An Osteopathic approach to Treatment for Sports Injuries, Back Pain, Headaches, Joint Pains, Sciatica, Brachialgia, Arthritis, Tennis elbow, Pulled ligaments & Muscles, Musculoskeletal problems in general



Ivy Cottage|Chapel Lane|Benson|Oxon|OX10 6LU



## Useful Contacts

### Moulsford Parish Council

<http://www.moulsford-pc.org.uk>

Name	Address	Phone	E-mail
Sarah Elvy (Chair)	37 Underhill	01491 651668	<a href="mailto:selvy@moulsford-pc.org.uk">selvy@moulsford-pc.org.uk</a>
Joanne Baker (Vice Chair)	2 Willow Cottages, Willow Court Lane	01491 652793	<a href="mailto:jbaker@moulsford-pc.org.uk">jbaker@moulsford-pc.org.uk</a>
Ben Partridge	22 Underhill	07828 902947	<a href="mailto:bpartridge@moulsford-pc.org.uk">bpartridge@moulsford-pc.org.uk</a>
Martin Eagle	Glebe Orchard, Glebe Close	01491 651313	<a href="mailto:meagle@moulsford-pc.org.uk">meagle@moulsford-pc.org.uk</a>
Sue Powell	Laburnham Cottage, Village Street	07786 250368	<a href="mailto:spowell@moulsford-pc.org.uk">spowell@moulsford-pc.org.uk</a>
Sinead Archer (Parish Clerk)		07879 423554	<a href="mailto:parishclerk@moulsford-pc.org.uk">parishclerk@moulsford-pc.org.uk</a>

Please report any traffic and parking issues experienced to: [trafficandparking@moulsford-pc.org.uk](mailto:trafficandparking@moulsford-pc.org.uk)

### South Oxfordshire District Councillors

Anne-Marie Simpson	Mallards, Moulsford, Wallingford, Oxfordshire, OX10 9HR	01491 651298	<a href="mailto:Anne-Marie.Simpson@southoxon.gov.uk">Anne-Marie.Simpson@southoxon.gov.uk</a>
Jane Murphy	Corner Cottage, High Street, South Moreton, Didcot, OX11 9AD	07970 932054	<a href="mailto:jane.murphy@southoxon.gov.uk">jane.murphy@southoxon.gov.uk</a>

### Oxfordshire County Councillor

Felix Bloomfield	The Views, Ewelme, OX10 6HF	07912 875199	<a href="mailto:felix.bloomfield@oxfordshire.gov.uk">felix.bloomfield@oxfordshire.gov.uk</a>
------------------	--------------------------------	--------------	--

## Moulsford Pavilion Hire Rates

The Pavilion is the ideal place to hire for your event and can accommodate a range of different activities.

Standard hire rates effective from 1st April:

Discounted rates are available for regular weekday evening bookings (Monday-Thursday).

Special rates apply to weddings.

The full list of rates can be obtained from the Bookings Secretary or can be seen on the Pavilion notice board.

Hire Fees	Mon-Fri: Hourly fee up to 6pm	Mon-Fri: Hourly fee after 6pm	Weekend: Hourly fee Anytime
Village	£14	£16	£16
Non-residents/ Commercial	£17	£22	£22

To book call Karen Gilmore, Pavilion Bookings Secretary 07707 068151 or email [moulsfordbookings@gmail.com](mailto:moulsfordbookings@gmail.com)

## Dates for the Diary

Date	Event	Location
12th October	10:30 Village Coffee Shop	Moulsford Pavilion
20th October	19:30 Moulsford Parish Council Meeting	Moulsford Pavilion
21st October	18:30 Winter Social (Fish and Chips)	Moulsford Pavilion
3rd November	17:45 Moulsford School Annual Fireworks Display	Opposite Moulsford Prep School (South Stoke side)
9th November	10:30 Village Coffee Shop	Moulsford Pavilion
19th November	19:30 Church Quiz Night	Moulsford Pavilion
25th November	18:30 Winter Social (Fish and Chips)	Moulsford Pavilion
14th December	10:30 Village Coffee Shop	Moulsford Pavilion
16th December	18:30 Gala Night	Moulsford Prep School
22nd December	18:00 Christmas Social	Moulsford Pavilion